



Scenic Bluffs
COMMUNITY HEALTH CENTERS

COMMUNITY IMPACT REPORT

2023





MISSION

Delivering accessible, patient-centered primary care, supporting healthier people and communities.

VISION

Scenic Bluffs Community Health Centers is the provider of choice with a nationally recognized reputation for excellence in individual primary care and building healthy communities.

VALUES

Values:



Compassion



Community



Excellence



Respect

A LETTER TO OUR COMMUNITIES

As we reflect on the past year, we are filled with gratitude for the opportunity to serve and grow alongside our cherished communities. The year 2023 marked a significant chapter in our journey, dedicated to enhancing accessibility and expanding the reach of our healthcare services. We have worked tirelessly to extend our reach, enhance our services, and strengthen our partnerships throughout our communities.



A highlight of 2023 was the onboarding of 41 new staff members, including 17 new providers - a significant step forward in our mission to expand access to quality care across our region. This expansion of our team is key to meeting the diverse healthcare needs of our community, ensuring that everyone has access to the care they need and deserve. While our work is ongoing, we are proud of our progress, which allowed us to increase the number of patients served by 20% in 2023. We also expanded hours and services at our Norwalk and La Crosse locations.

We look forward to the year ahead. 2024 holds special significance for us as we celebrate 30 years of providing patient-centered primary care in western Wisconsin. This milestone is a testament to the enduring trust and support of our community members, without whom our journey would not have been possible. We eagerly anticipate the opportunities this year will bring, including the expansion to new service locations. Furthermore, we are thrilled to unveil our new strategic plan, which will guide our efforts in meeting the ever-changing needs of our community.

As we look toward the future, we are committed to upholding our core values of compassion, community, excellence and respect in all facets of our service delivery. Together, we will continue to strive towards our shared vision of healthier, thriving communities. Thank you for being an integral part of our story.

Warm regards,

A handwritten signature in black ink that reads "Kim Hawthorne".

Kim Hawthorne, CEO

CONNECTING PATIENTS TO CARE & RESOURCES

28,533 patient visits



1,271
COMPLEMENTARY
THERAPIES VISITS



1,511
ENABLING
SERVICES



4,449
BEHAVIORAL
HEALTH VISITS

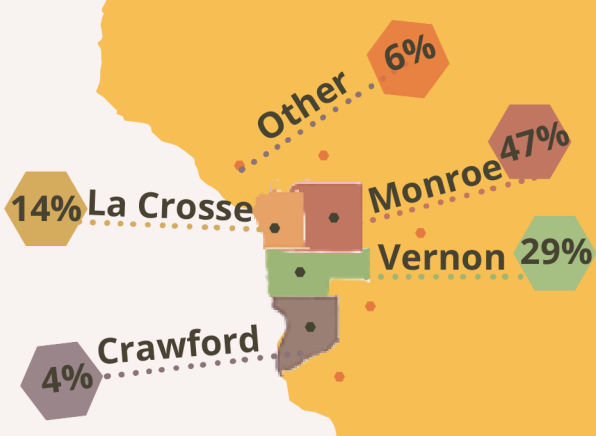


8,947
MEDICAL
VISITS

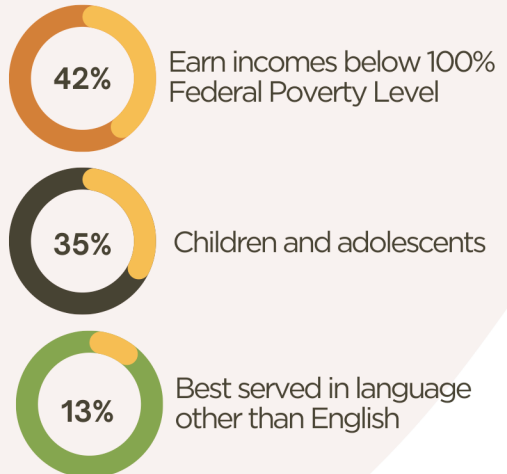


12,355
DENTAL
VISITS

Where our patients are from:



7,070 Patients Served



4

Clinical service sites in
Cashton, Norwalk & La Crosse

25

School-based services sites
for dental, behavioral health
and/or school nursing

20%

Increase in patients served
with service expansions
(vs. 2022)

IN AND BEYOND OUR WALLS

174

Individuals certified in
CPR and First Aid



186

Pounds of medication
safely disposed of in
drop-box



466

Individuals enrolled in
health insurance



759

Students served by
mobile oral health
program



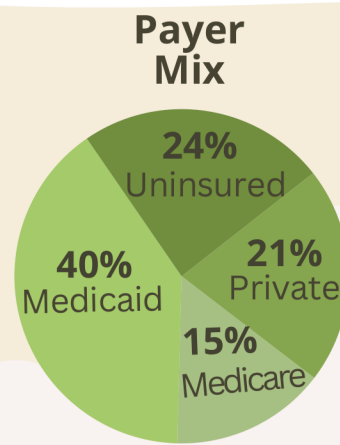
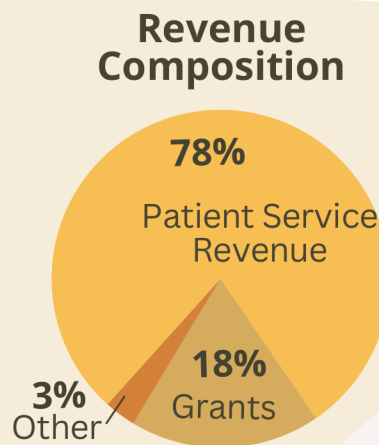
Proud supporter of local
organizations & school programs
through sponsorships and
donations.



Our staff participate in more
than 50 local groups, coalitions
& boards that are focused on
improving health in our
communities.



INVESTING IN THE HEALTH OF OUR COMMUNITIES



DEVELOPING OUR FUTURE HEALTHCARE WORKFORCE

10

Academic Partnerships
for training health care
professions

Fields of Study



46

Students Trained
by our healthcare
professionals

HOW TO SUPPORT OUR WORK

Scenic Bluffs Health Center, Inc., a nonprofit 501c3, is committed to enhancing the health and wellbeing of our communities. Donations to our organization not only support our mission, but allow us to further meet community needs by providing accessible, patient-centered primary care.

Donors and supporters play an important role in helping us meet our mission, ensuring we can continue to provide essential support services, such as our Help Team, Dental Sealant and Fluoride Program and our Read to Me program, among others. Donations allow us to continue to look for growth opportunities so that we can improve access to our communities and neighbors.

We are proud of the work of our staff in ensuring patients have positive experiences. We hope that you will consider the valuable work of Scenic Bluffs in your giving opportunities.

Below are ways to support us:

Donate

For more information, visit scenicbluffs.org/donate

Advocate

For more information, visit scenicbluffs.org/advocacy

Serve

For more information, visit scenicbluffs.org/board

THANK YOU TO OUR SUPPORTERS

- Advance America
- AmazonSmile
- Amy R Schanhofer
- Ann Klinkner
- Andre Paquette
- Becky Gretebeck
- Bob Sanders
- Cashton's Cradles to Crayons
- Coon Valley Lions Club
- Courtney Messer
- Edgar Maya
- Emily Hayes
- Endodontic Specialists
- Forward Path Logistics
- Givio Charitable
- Great Rivers United Way
- Green Bay Packers Foundation
- Health Resources & Services Administration
- Hetti Brown
- Hundt Implement
- Jill Peterson
- Judi Zabel
- Karine & Mike Brueggen
- Kiwanis Club of Sparta
- Kwik Trip, Inc
- La Crosse Loggers
- La Farge Lions Club
- Liz Kleba
- Matthew Bersagel-Braleay
- Melvin Schmitz
- Michael Windle
- National Association of Community Health Centers
- OptumServe
- Organic Valley
- Paul Gerber
- Sara Cook
- Scenic Rivers Area Health Education Center
- Sandi Canelo
- Sonya Lenzendorf
- The Roots and Wings Foundation
- The Toro Company
- The Weitzman Institute
- Town of Jefferson
- Town of Portland
- Walgreens- Sparta
- Walmart- Sparta
- Walmart- Mormon Coulee
- Westby Lions Club
- Wisconsin Alliance of Health Insurers
- Wisconsin Department of Health Services
- Wisconsin Primary Health Care Association

ABOUT US

As a Community Health Center, Scenic Bluffs knows the importance of providing healthcare within our doors, while also building strong and healthy communities. Our mission is rooted in reducing health barriers in the communities we serve. We offer a wide range of primary care services and offer support services to assist and guide individuals with day-to-day needs.

We are an independent, non-profit healthcare provider, caring for western Wisconsin. We offer care to individuals throughout the region, with a service area that includes Monroe, Vernon, Crawford and La Crosse counties. Our staff not only provides clinical care, but helps link individuals with resources that allow them to stay healthy, and to lead and support initiatives for healthy communities. Scenic Bluffs has locations in Cashton, Norwalk and La Crosse, along with services in several local school districts.

SCENIC BLUFFS SERVICE LOCATIONS

Cashton

Scenic Bluffs
238 Front Street
608-654-5100

Norwalk

Scenic Bluffs
200 W. North Street
608-654-5100

La Crosse Dental

Scenic Bluffs
2030 7th Street
608-654-5100

La Crosse Behavioral Health

212 11th St S
608-654-5100



Scenic Bluffs
COMMUNITY HEALTH CENTERS